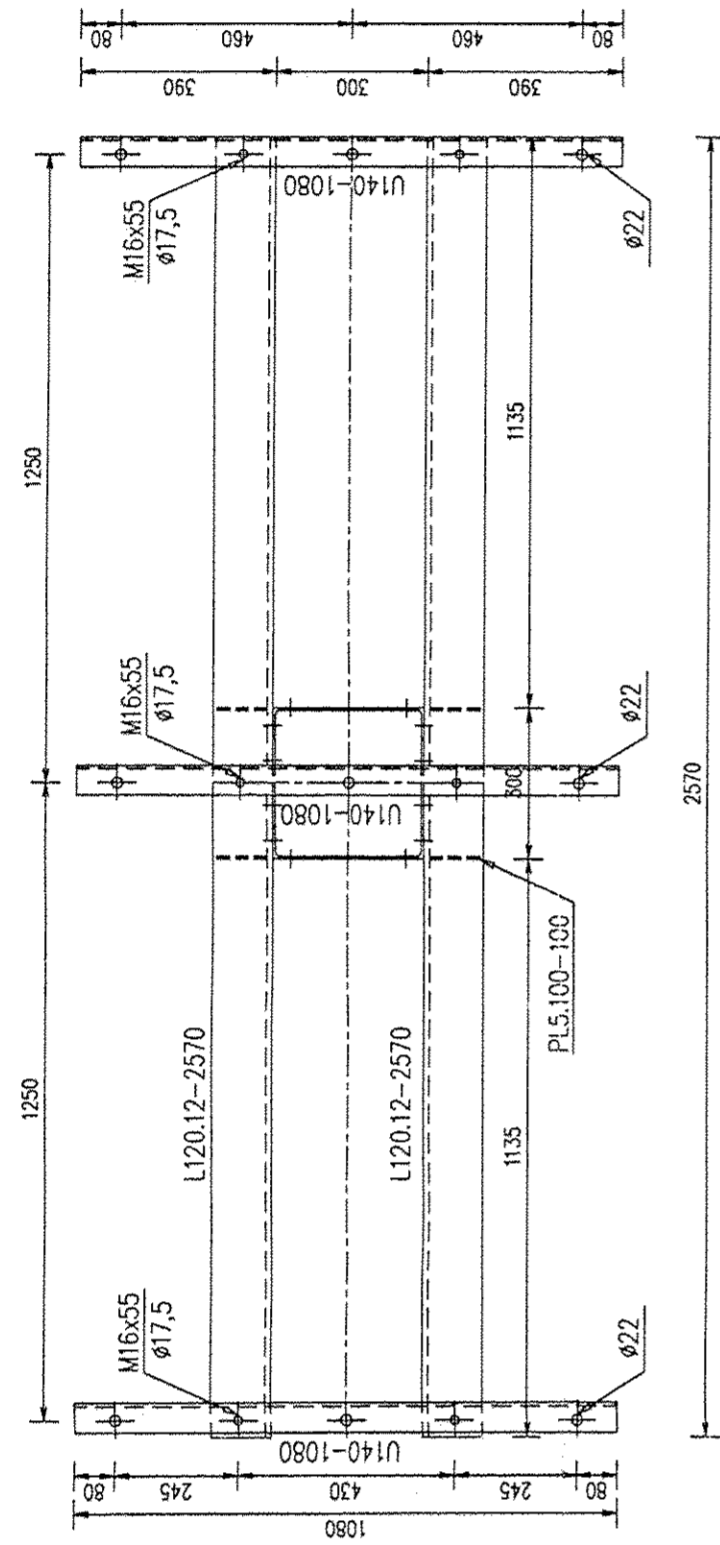
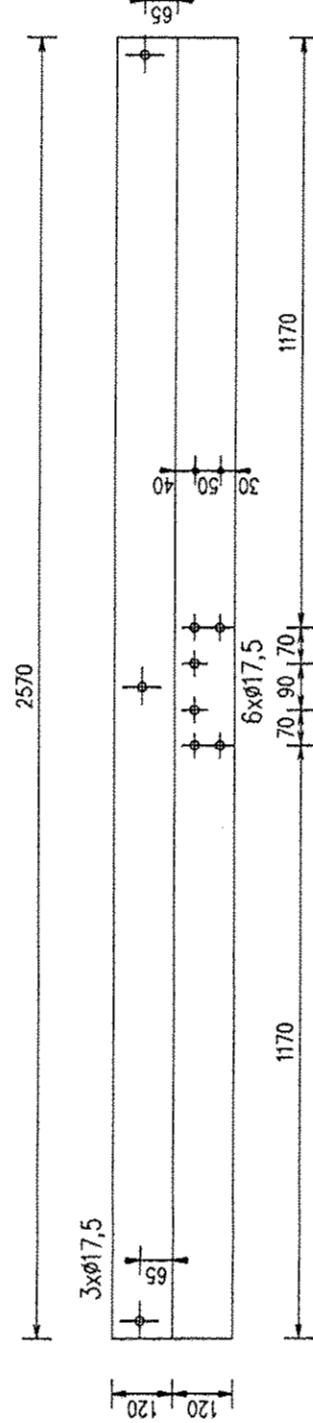


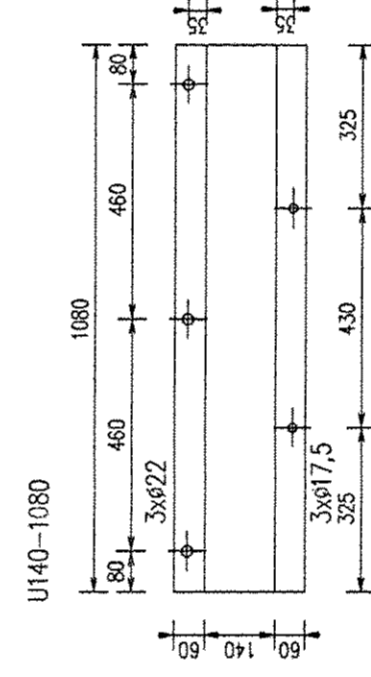
VIEW P



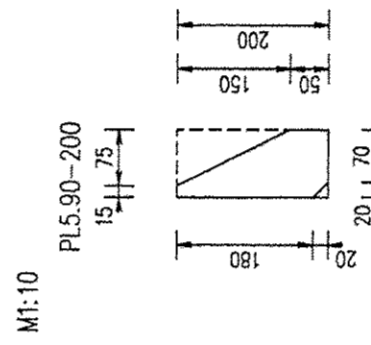
CARRIER M 1:5
L120.12-2570



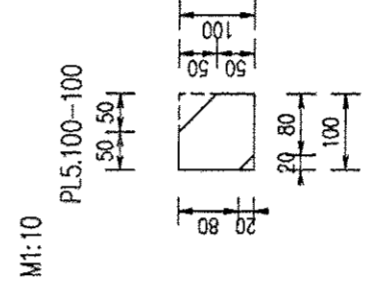
CROSS BEAM PI M 1:5



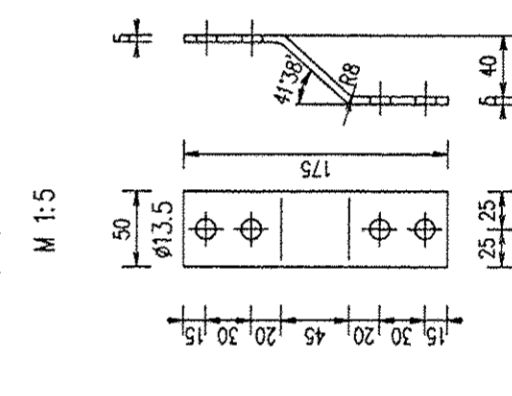
STIFFENER



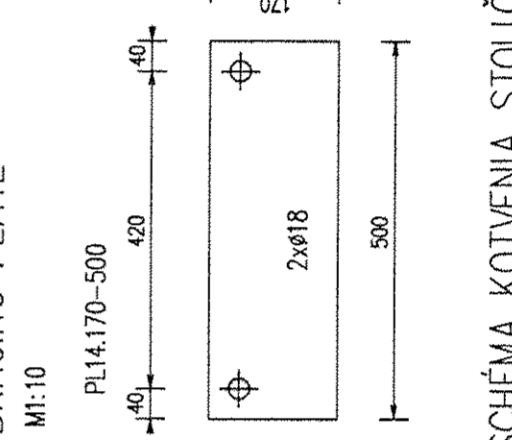
STIFFENER



EARTHING



BRACING PLATE



CONNECTING PIECE

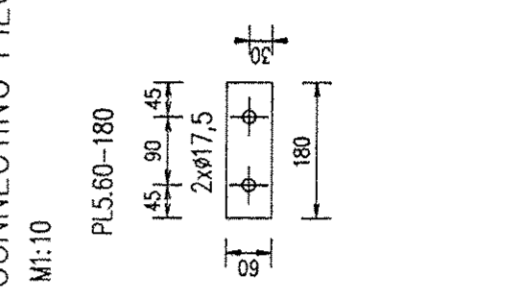
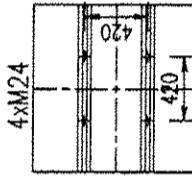
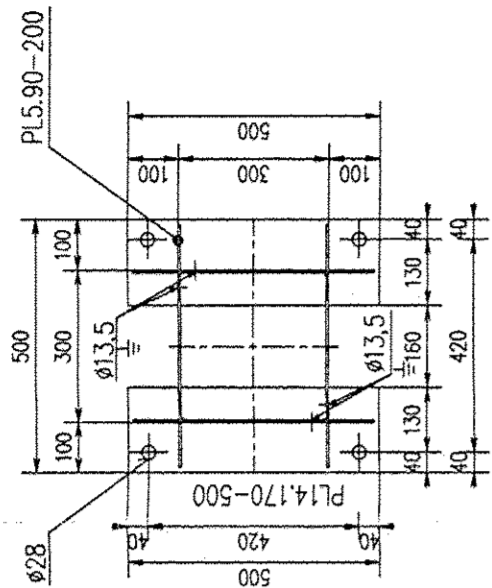



SCHÉMA KOTVENIA STOLIČKY BRACING OF THE SUPPORTS



SECTION 1-1



REMARKS:

- THE WHOLE SUPPORT IS HOT DIP GALVANIZED
 — COMPLIES WITH THE STANDARD STN 73 1401
 — GROUP B ACC. TO STANDARD STN 73 2601
 — FILLET WELD :  a=4mm

POZNÁMKA :

- CELÚ KONŠTRUKCIU ZINKOVAŤ!
----- KONŠTRUKCIA JE NAVRHNUTÁ V ZMYSE NORMY STN 73 1401
----- VYROBNÁ SKUPINA B PODĽA NORMY STN 73 2601
----- VŠETKY KÚTOVÉ ZVARY : VÝŠKA ZVARU : \varnothing a=4mm

TOTAL WEIGHT : 295,0 kg
CELKOVÁ HMOTNOST : 295,0 kg

ITEM	PART	QTY	DESCRIPTION	MATERIAL	WEIGHT
		8	OCEL/ STEEL PL30.20-43	S 235	3,2
		4	OCEL/ STEEL ø24-135	S 235	2,0
		4	PODLOŽKA HRUBÁ/ WASHER ø26	STN 02 1708	0,2
		8	MATICA/ NUT M24	STN 02 1601.1	2,0
		6	PODLOŽKA POD "U"/ WASHER FOR "U" ø18	STN 02 1739	0,2
		18	PODLOŽKA PRUŽNÁ/ LOCKING WASHER ø16,3	STN 02 1741	0,2
		12	PODLOŽKA / WASHER ø18	STN 02 1721	0,4
		6	SKRUTKA S MATICOU/ SCREW WITH WASHER M16x55	ON 02 1308	0,9
		12	SKRUTKA S MATICOU/ SCREW WITH WASHER M16x45	ON 02 1308	1,7
		4	PODLOŽKA PRUŽNÁ/ LOCKING WASHER ø12,2	STN 021740	0,1
		1	SKRUTKA S MATICOU/ SCREW WITH WASHER M12x35	ON 021741	0,2
		4	OCEL/ STEEL PL5.60-195	S 355	0,4
		8	OCEL/ STEEL PL5.90-200	S 355	5,7
		4	OCEL/ STEEL PL5.100-100	S 355	1,8
		48	OCEL/ STEEL PL5.60-180	S 355	22,1
		2	OCEL/ STEEL PL14.170-500	S 355	18,7
		2	OCEL/ STEEL L170.12-2570	S 355	111,0
		3	OCEL/ STEEL U140-1080	S 235	51,8
		4	OCEL/ STEEL L60.5-3846	S 355	75,0

0	05/2005	Ing. HALAC	INITIAL EDITION /	Ing. NEMETH	ING. RICHMAN
REV	DATE	DESIGN PAR	MODIFICATIONS	VERIFIED PAR	APPROVE
REV	DATE	DRAWN BY	REVISIONS	CHECKED BY	APPROVED

Elektrovd Holding, a.s.

			<p>This document, which is a LAR LOGO and property, may contain valuable confidential information and must not be copied, reproduced, or disclosed without the prior written consent of LAR LOGO</p>
---	---	---	---

ATAIRE / JTB

K 6KV CABLES **AIR LIQUIDE**

STOLÍČKA POD PODPERNÉ ISOLÁTORY

STEEL SUPPORT FOR THE POST INSULATORS

HEIGHT 4000mm	1:15	30-30Z3-01	AZ-161-519
---------------	------	------------	------------